




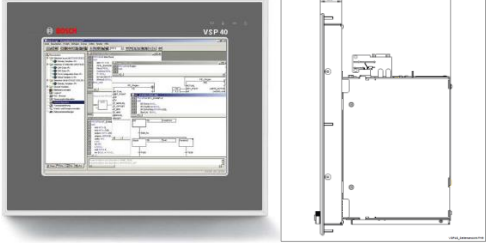
PRINTING PRODUCTIVITY

# Corrective Measures WinStudio Bug 2021

page 1 of 3  
notes by MPS Service  
date 17 December 2020  
direct number +31 (0) 26 760 15 05  
e-mail service@mps4u.com

In old Bosch Rexroth computer systems a Year 2021 Problem could be present. These computers are used in MPS presses as main HMI. This document describes how to solve this problem.

Computer types that might have this bug:

 <p>Computer, mounted in Main Cabinet</p>	 <p>Touch screen panel with integrated computer on backside.</p>
<p>VSB40.3D1G-1G0NN-C2D-DN-NN-FW</p>	<p>VSP16.1DBE-512NN-C1C-AN-NN-FW VSP16.3DBG-1G0NN-C2D-DN-NN-FW</p>

What needs to be done is replacing 2 windows files on this computer. What you need is an USB drive, keyboard and mouse.

The first step is to obtain the files from Bosch Rexroth. Because of license issues, you have to mail to [helpdesk.service@boschrexroth.de](mailto:helpdesk.service@boschrexroth.de) and ask for the fix according to the:

Remedy for licenses of Bosch Rexroth control systems and Engineering tools expiring on 01/01/2021

You'll get two files:



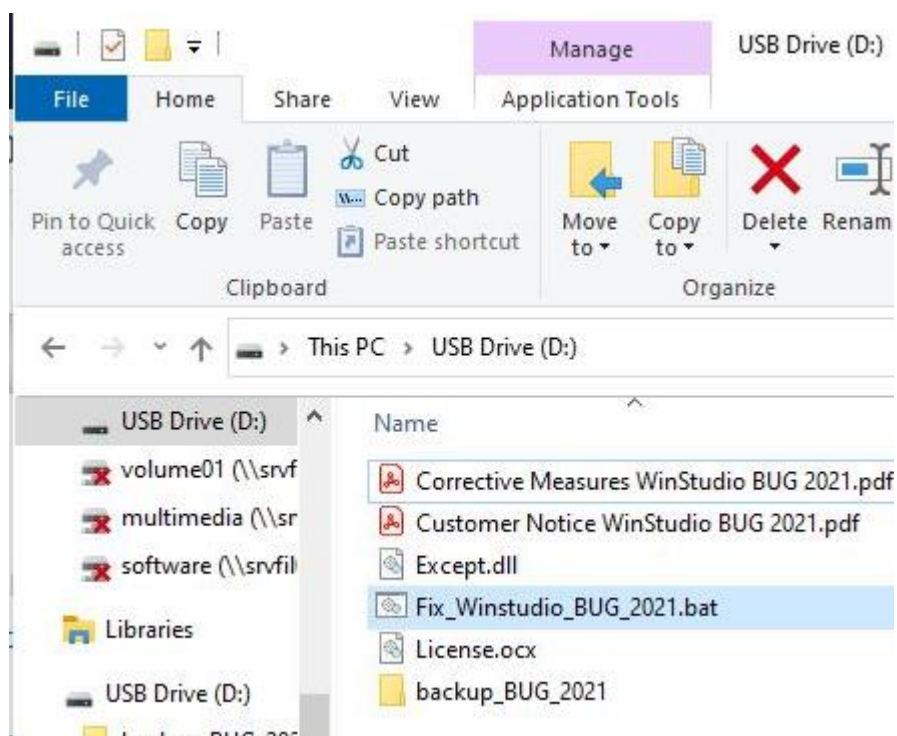
PRINTING PRODUCTIVITY

This PC > Downloads > License.ocx\_Except.dll\_Copy\_To\_%WinDir%\_system32.zip


Name	Type	Compressed size	Password ...	Size
Except.dll	Application extension	33 KB	No	
License.ocx	ActiveX control	118 KB	No	

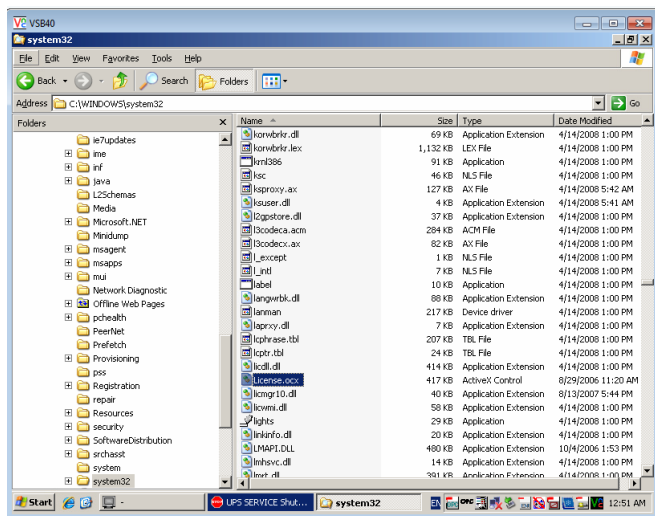
MPS will provide a batch file, also on the MPS site : [www.mps4u.com/bug-support](http://www.mps4u.com/bug-support)

Put those files on the USB drive:

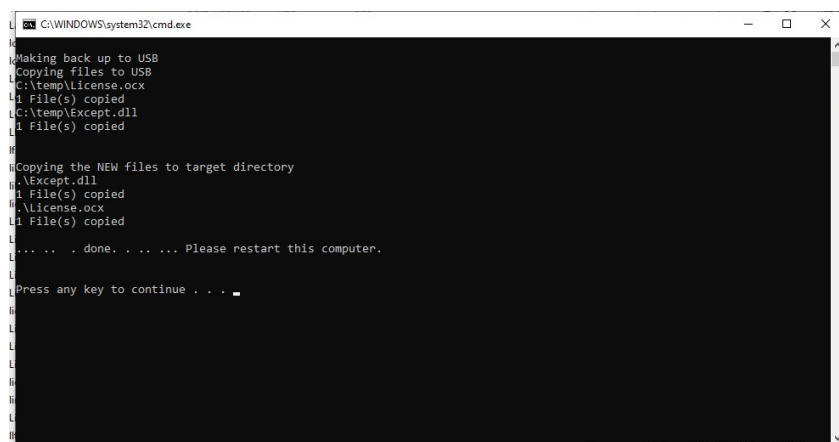


### Apply the fix

- Connect an USB Keyboard and mouse to the computer. (Either via the operator's panel USB connector or directly in the computer located in the Main cabinet.)
- Press [ ALT ] + [ F4 ] to close the HMI application on the HMI-PC.
- Insert the provided USB stick into the computer
- Open the USB drive when prompted for – or – press [  ] + [ E ]



- Select the USB drive and locate the file from the MPS-site: “Fix\_Winstudio\_BUG\_2021.bat “ and double click on this file.
- A black screen appears, carrying out the right measures.



- Restart the computer.
- Done.